

DURDEN & HUNT

INTERNATIONAL



Waltham Road, Woodford Green IG8

£475,000

- Mid-Terraced Home
- Kitchen
- Garden With Patio Area
- Good Sized Living Room
- Three Well Proportioned Bedrooms
- Excellent Transport Links
- Dining Area
- Family Bathroom

309 High Road, Loughton, Essex, IG10 1AL
0203 026 0160

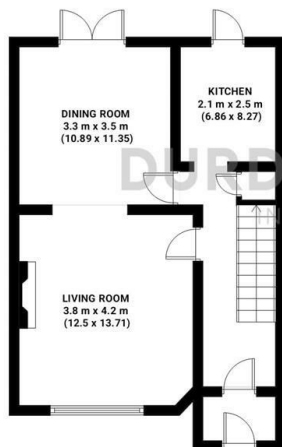
loughton@durdenandhunt.co.uk
<https://www.durdenandhunt.co.uk/>

Waltham Road

Total area: approx 83.63 m² (900.24 sq. feet)

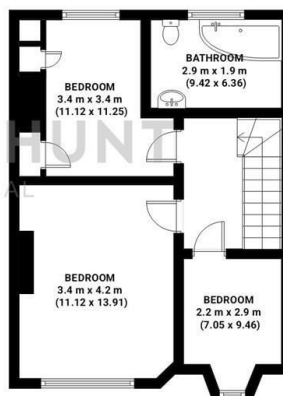
Ground Floor

Total area: approx 42.07 sq. metres (452.79 sq. feet)



1st Floor

Total area: approx 41.56 sq. metres (447.3 sq. feet)



THIS PLAN IS FOR ILLUSTRATIVE PURPOSES ONLY

Whilst every attempt has been made to ensure the accuracy of the floor plan contained here, measurements of doors, windows, rooms and any other items are approximate and no responsibility is taken for any error, omission or misstatement.



Viewings

Viewings by arrangement only. Call 0203 026 0160 to make an appointment.

Council Tax Band

D

EPC Rating:

D

Energy Efficiency Rating		Current	Potential
Very energy efficient - lower running costs			
(92 plus) A			
(81-91) B			79
(69-80) C			
(55-68) D		61	
(39-54) E			
(21-38) F			
(1-20) G			
Not energy efficient - higher running costs			
England & Wales		EU Directive 2002/91/EC	