

DURDEN & HUNT

INTERNATIONAL



The Quadrangle, London W2

Asking Price £1,400,000

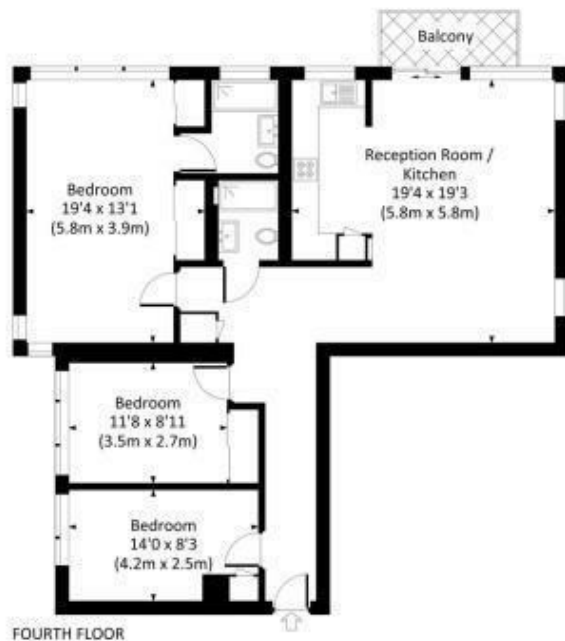
- Gated Development
- Fourth Floor With Lift
- Three Bedrooms & Two Bathrooms
- Well Located For Hyde Park , Marble Arch & Connaught Village
- 24 Hour Porter
- Spacious Reception Room With Balcony
- Located In the Heart Of The Hyde Park Estate
- Communal Gardens
- Open Plan Kitchen
- APPROX 1103 SQFT / 102.5 SQM

309 High Road, Loughton, Essex, IG10 1AL
0203 026 0160

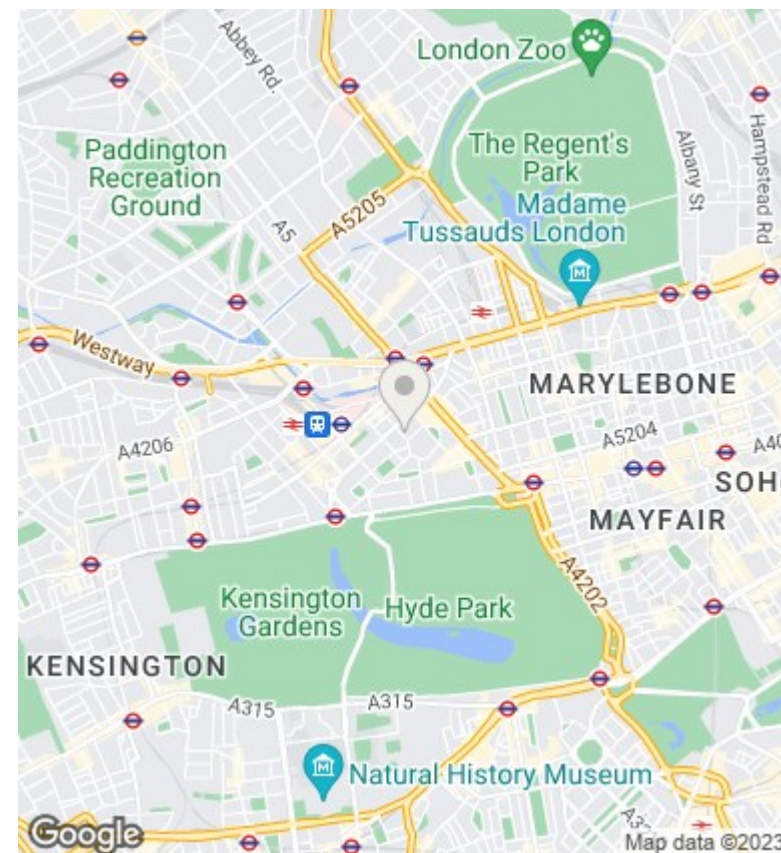
loughton@durdenandhunt.co.uk
<https://www.durdenandhunt.co.uk/>

THE QUADRANGLE, W2

Approx. gross internal area
1103 Sq Ft. / 102.5 Sq M.



All measurements have been made in accordance with RICS code of Measuring Practice which are approximate only and only for illustrative purposes. For the avoidance of doubt, Dowling Jones Design shall not be liable for any reliance on these measurements. © 2018 www.dowlingjones.com 020 7610 9933



Viewings

Viewings by arrangement only. Call 0203 026 0160 to make an appointment.

Council Tax Band

EPC Rating:

Energy Efficiency Rating		
	Current	Potential
<i>Very energy efficient - lower running costs</i>		
(92 plus) A		
(81-91) B		
(69-80) C		
(55-68) D		
(39-54) E		
(21-38) F		
(1-20) G		
<i>Not energy efficient - higher running costs</i>		
England & Wales	EU Directive 2002/91/EC	