

# DURDEN & HUNT

INTERNATIONAL



## High Road, Chigwell IG7

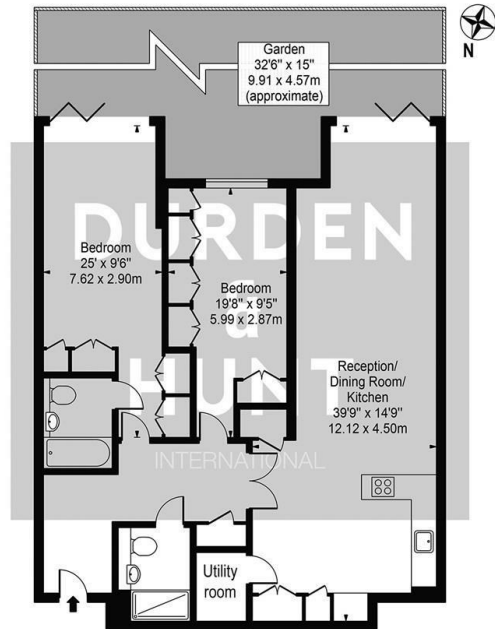
Guide Price £850,000

- Two Bedroom Ground Floor Flat
- Gated Modern Development
- High Specification Throughout
- Utility Room
- Two Bathrooms
- 2 Underground Parking Spaces
- Patio Area
- Excellent Location
- Next To Chigwell Station
- Open Plan Kitchen/Diner/Living Room

309 High Road, Loughton, Essex, IG10 1AL  
0203 026 0160

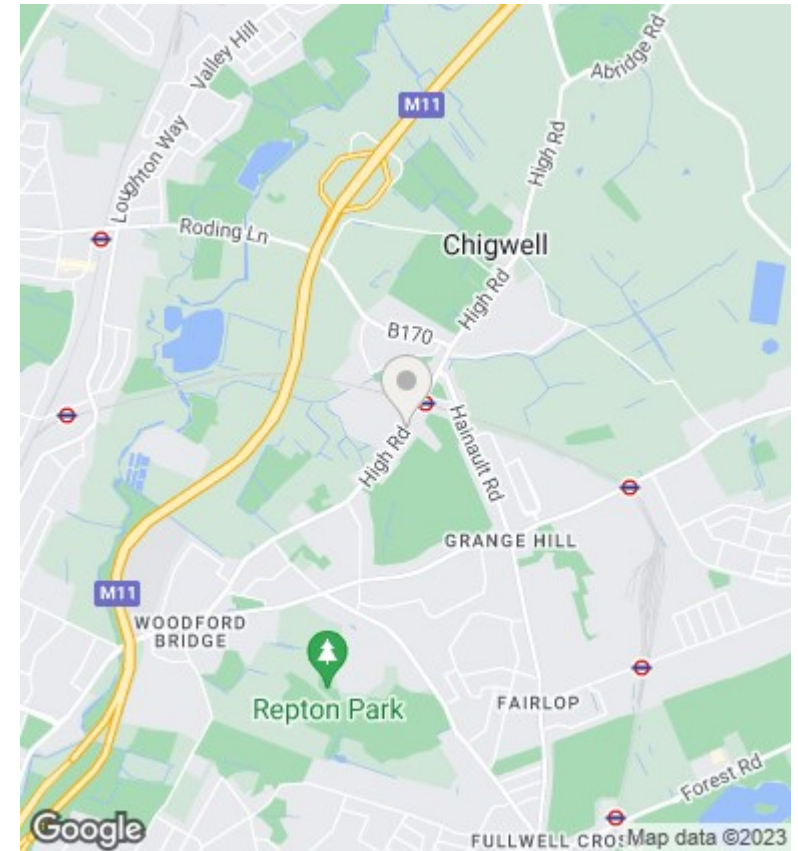
[loughton@durdenandhunt.co.uk](mailto:loughton@durdenandhunt.co.uk)  
<https://www.durdenandhunt.co.uk/>

**Charlesworth Court**  
 Approx. Gross Internal Area 1153 Sq Ft - 107.12 Sq M



Ground Floor  
 For Illustration Purposes Only - Not To Scale

This floor plan should be used as a general outline for guidance only and does not constitute in whole or in part an offer or contract. Any intending purchaser or lessee should satisfy themselves by inspection, searches, enquiries and full survey as to the correctness of each statement. Any areas, measurements or distances quoted are approximate and should not be used to value a property or be the basis of any sale or let.



## Viewings

Viewings by arrangement only. Call 0203 026 0160 to make an appointment.

## Council Tax Band

## EPC Rating:

B

Energy Efficiency Rating		Current	Potential
<i>Very energy efficient - lower running costs</i>			
(92 plus) <b>A</b>			
(81-91) <b>B</b>		85	85
(69-80) <b>C</b>			
(55-68) <b>D</b>			
(39-54) <b>E</b>			
(21-38) <b>F</b>			
(1-20) <b>G</b>			
<i>Not energy efficient - higher running costs</i>			
<b>England &amp; Wales</b>		EU Directive 2002/91/EC	