

Off-Market
Listing

Barton Close, Chigwell

£2,150,000

Contact us today

Barton Close, Chigwell IG7

£2,150,000

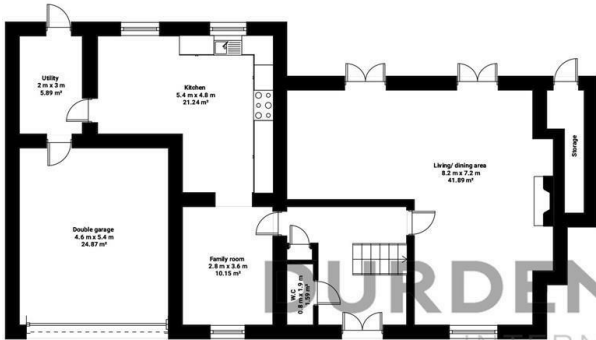
- Detached Home
- Family Room
- Four Bedrooms With En Suites
- Good Sized Garden
- Kitchen
- Living And Dining Area
- Additional Two Bedrooms
- Separate Utility Room
- Downstairs WC And Family Bathroom
- Double Garage And Driveway

Barton Close

Total area: approx 300.22 sq. metres (3231.5 sq. feet)

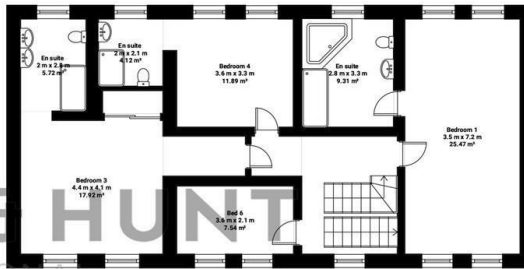
Ground Floor

Total area: approx 120.18 sq. metres (1293.6 sq. feet) 300.22 m²



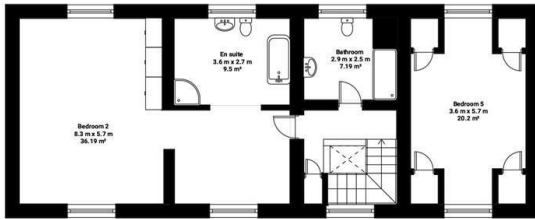
1st Floor

Total area: approx 98.70 sq. metres (1062.4 sq. feet)



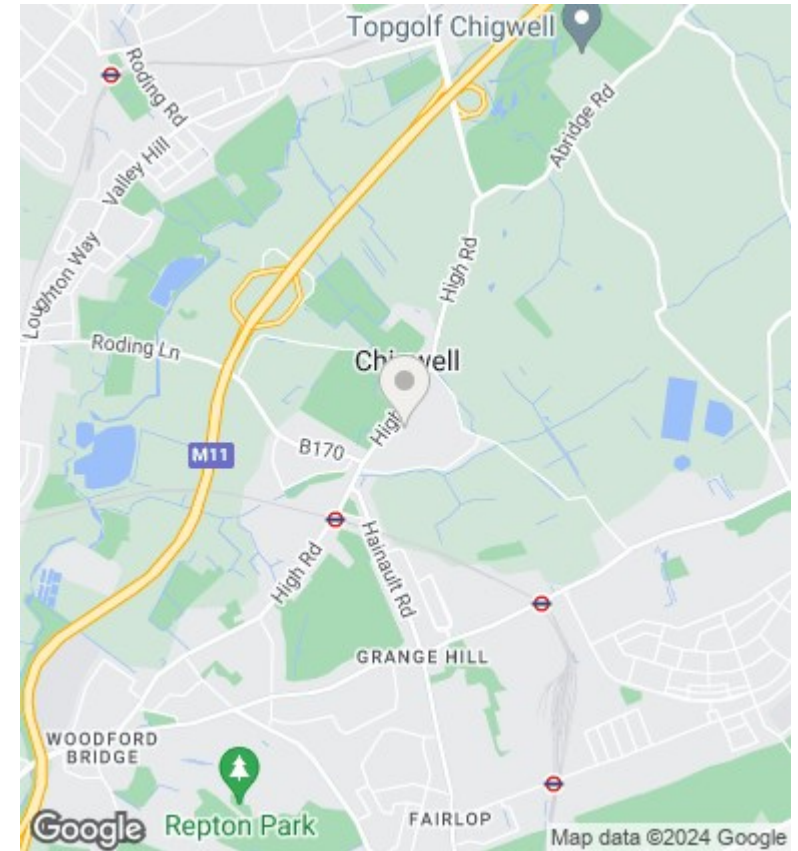
2nd Floor

Total area: approx 81.35 sq. metres (875.6 sq. feet)



THIS PLAN IS FOR ILLUSTRATIVE PURPOSES ONLY

Whilst every attempt has been made to ensure the accuracy of the floor plan contained here, measurements of doors, windows, rooms and any other items are approximate and no responsibility is taken for any error, omission or misstatement.



Viewings

Viewings by arrangement only. Call 0203 026 0160 to make an appointment.

Council Tax Band

G

EPC Rating:

D

Energy Efficiency Rating		Current	Potential
<i>Very energy efficient - lower running costs</i>			
(92 plus) A			
(81-91) B			79
(69-80) C		66	
(55-68) D			
(39-54) E			
(21-38) F			
(1-20) G			
<i>Not energy efficient - higher running costs</i>			
England & Wales		EU Directive 2002/91/EC	