

# DURDEN & HUNT

INTERNATIONAL



## Porchester Terrace, London W2

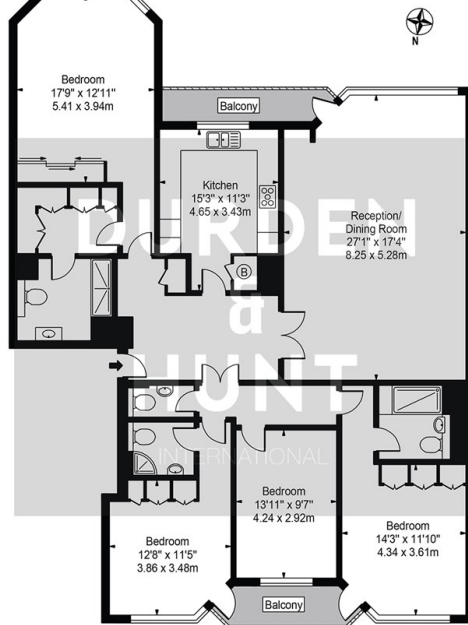
Asking Price £5,600,000

- Four Bedrooms
- Close To Transport
- Spacious Lounge With Space To in
- Three Bathroom & Separate Toilet
- Premier Address
- Two Balconies
- Close To Hyde Park
- Modern Separate Kitchen



## Hyde Park Towers

Approx. Gross Internal Area 1851 Sq Ft - 171.96 Sq M



Sixth Floor  
For Illustration Purposes Only - Not To Scale

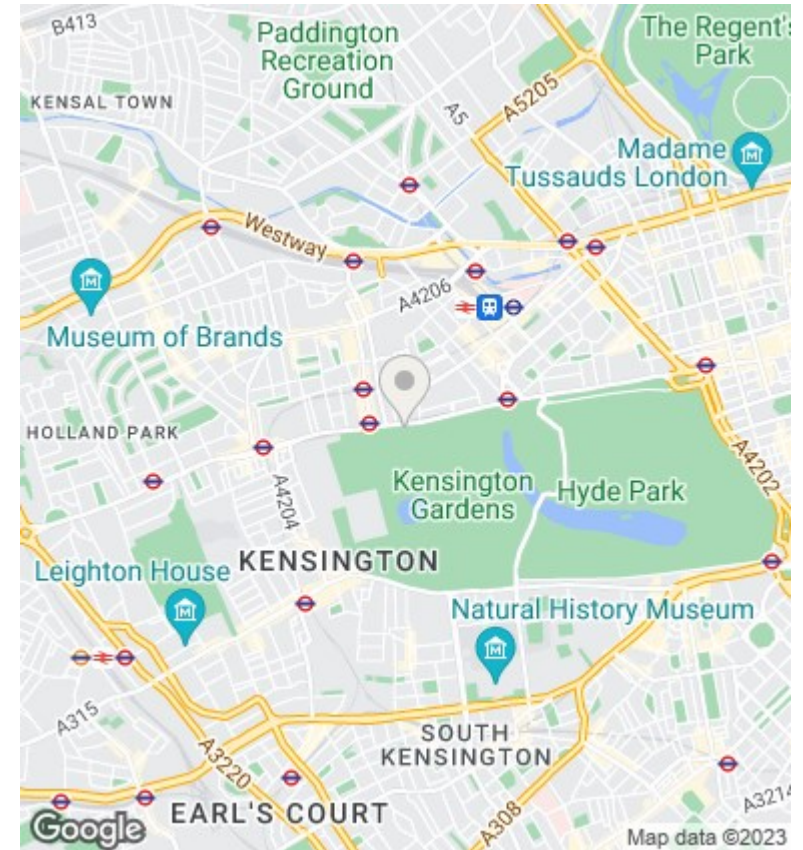
This floor plan should be used as a general outline for guidance only and does not constitute in whole or in part an offer or contract. Any intending purchaser or lessee should satisfy themselves by inspection, searches, enquiries and full survey as to the correctness of each statement. Any areas, measurements or distances quoted are approximate and should not be used to value a property or be the basis of any sale or let.

### Viewings

Viewings by arrangement only. Call 0203 026 0160 to make an appointment.

### Council Tax Band

### EPC Rating:



Energy Efficiency Rating		
	Current	Potential
<i>Very energy efficient - lower running costs</i>		
(92 plus) <b>A</b>		
(81-91) <b>B</b>		
(69-80) <b>C</b>		
(55-68) <b>D</b>		
(39-54) <b>E</b>		
(21-38) <b>F</b>		
(1-20) <b>G</b>		
<i>Not energy efficient - higher running costs</i>		
<b>England &amp; Wales</b>	EU Directive 2002/91/EC	