

# DURDEN & HUNT

INTERNATIONAL



## Manor Road, Chigwell IG7

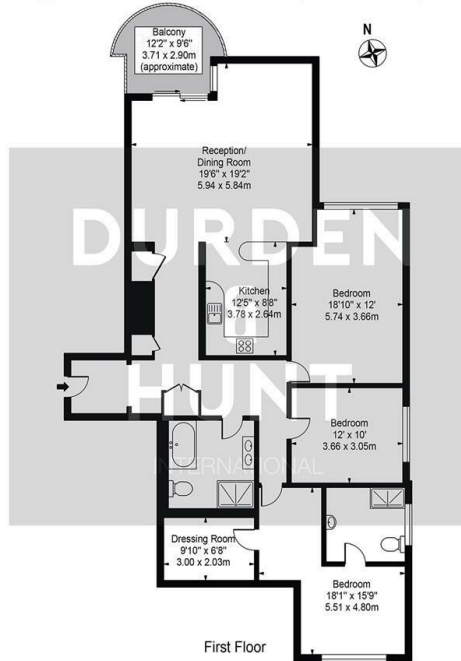
Offers In Excess Of £750,000

- Luxury Apartment
- Large Lounge with Space For Dining
- Master Bedroom With Ensuite & Dressing Room
- Second Bathroom
- Gated Development
- Balcony Overlooking Well Maintained Communal Gardens
- First Floor With Lift In The Development
- Over 1500 SQFT
- Three Bedrooms
- Prestigious Manor Road Location

309 High Road, Loughton, Essex, IG10 1AL  
0203 026 0160

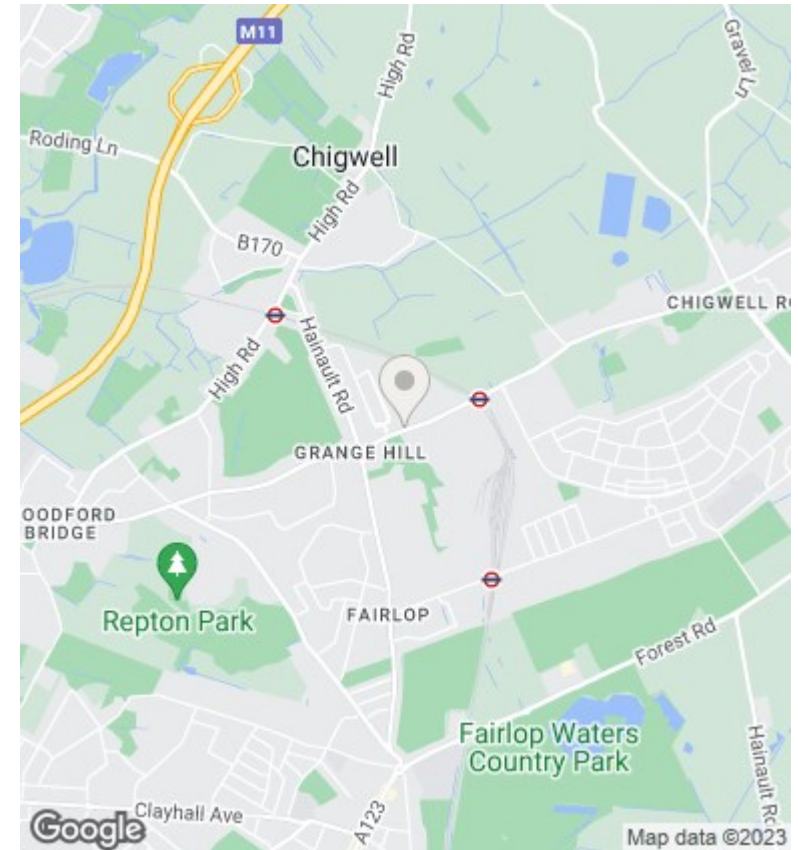
[loughton@durdenandhunt.co.uk](mailto:loughton@durdenandhunt.co.uk)  
<https://www.durdenandhunt.co.uk/>

**Millbrook**  
 Approx. Gross Internal Area 1502 Sq Ft - 139.54 Sq M



For Illustration Purposes Only - Not To Scale

This floor plan should be used as a general outline for guidance only and does not constitute in whole or in part an offer or contract. Any intending purchaser or lessee should satisfy themselves by inspection, searches, enquiries and full survey as to the correctness of each statement. Any areas, measurements or distances quoted are approximate and should not be used to value a property or be the basis of any sale or let.



## Viewings

Viewings by arrangement only. Call 0203 026 0160 to make an appointment.

## Council Tax Band

G

## EPC Rating:

D

Energy Efficiency Rating		Current	Potential
<i>Very energy efficient - lower running costs</i>			
(92 plus) <b>A</b>			
(81-91) <b>B</b>			
(69-80) <b>C</b>			
(55-68) <b>D</b>		67	67
(39-54) <b>E</b>			
(21-38) <b>F</b>			
(1-20) <b>G</b>			
<i>Not energy efficient - higher running costs</i>			
<b>England &amp; Wales</b>		EU Directive 2002/91/EC	