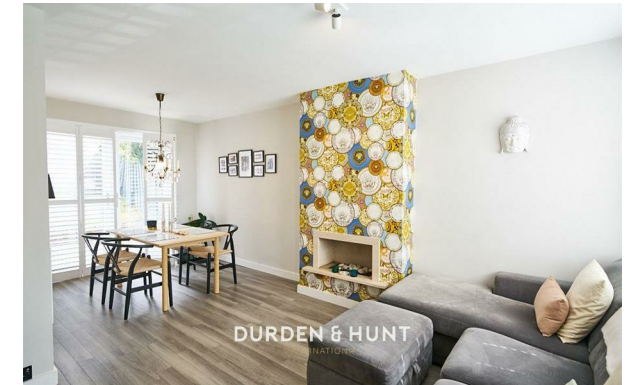


DURDEN & HUNT

INTERNATIONAL



Barncroft Close, Loughton IG10

£500,000

- Open Plan Living And Dining Room
- Family Bathroom
- Excellent Transport Links
- Modern Kitchen
- Garden With Shed
- Two Double Size Bedrooms
- Private Drive

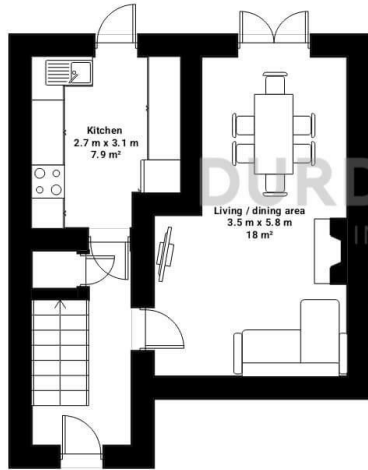
309 High Road, Loughton, Essex, IG10 1AL
0203 026 0160

loughton@durdenandhunt.co.uk
<https://www.durdenandhunt.co.uk/>

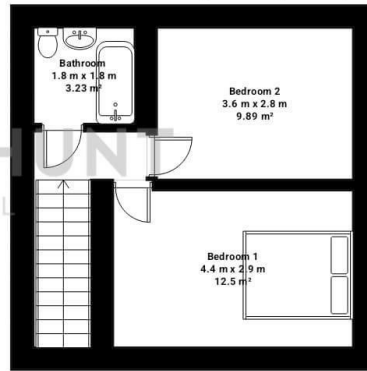
Barncroft Close

Total area: approx 68.95 sq. metres (742.1 sq. feet)

Ground floor
Total area: approx 36.13 sq. metres (388.9 sq. feet)



1st floor
Total area: approx 32.82 sq. metres (353.2 sq. feet)



THIS PLAN IS FOR ILLUSTRATIVE PURPOSES ONLY

Whilst every attempt has been made to ensure the accuracy of the floor plan contained here, measurements of doors, windows, rooms and any other items are approximate and no responsibility is taken for any error, omission or misstatement.

Viewings

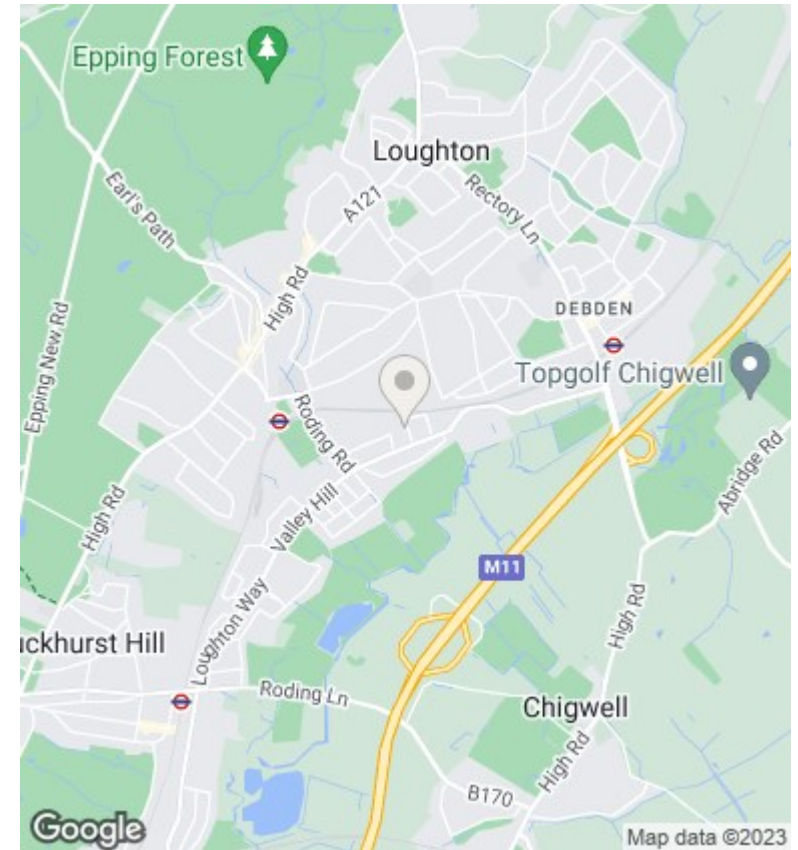
Viewings by arrangement only. Call 0203 026 0160 to make an appointment.

Council Tax Band

C

EPC Rating:

C



Energy Efficiency Rating		Current	Potential
Very energy efficient - lower running costs			
(92 plus) A			87
(81-91) B		72	
(69-80) C			
(55-68) D			
(39-54) E			
(21-38) F			
(1-20) G			
Not energy efficient - higher running costs			
England & Wales		EU Directive 2002/91/EC	