

DURDEN & HUNT

INTERNATIONAL



Davinia Close, Woodford Green IG8

Offers In Excess Of £650,000

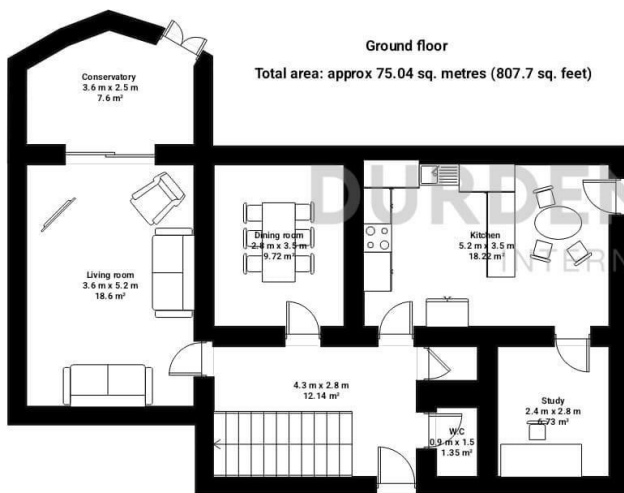
- Four Bedroom Family Home
- Ground Floor Study
- Downstairs WC & Family Bathroom
- Garage & Rear Driveway
- Multiple Reception Areas
- Separate Dining Room
- Modern Estate
- Kitchen With Space For Dining
- Large Lounge & Conservatory Room
- Close To Woodford & Chigwell Stations.

309 High Road, Loughton, Essex, IG10 1AL
0203 026 0160

loughton@durdenandhunt.co.uk
<https://www.durdenandhunt.co.uk/>

Davinia close

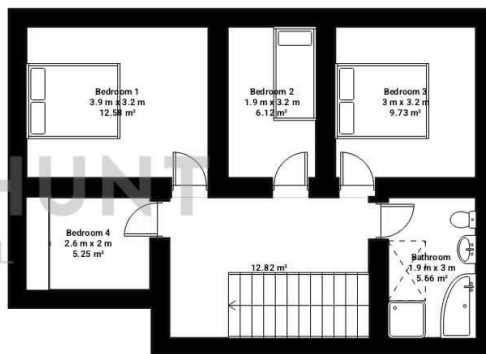
Total floor area: approx 127.2 sq. metres (1369.1 sq. feet)



Ground floor
Total area: approx 75.04 sq. metres (807.7 sq. feet)

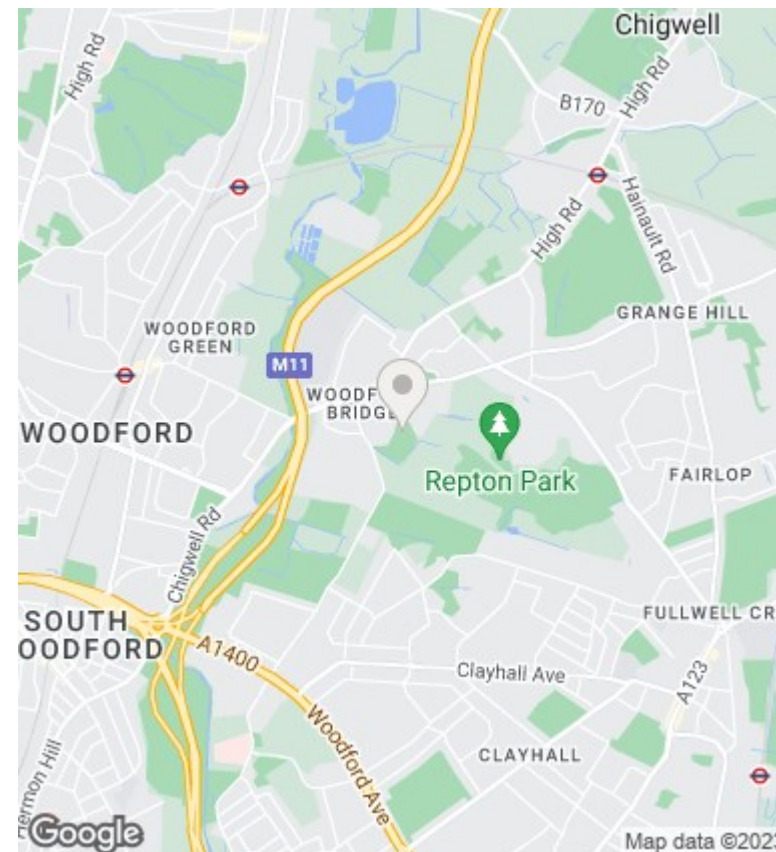
1st floor

Total area: approx 52.16 sq. metres (561.4 sq. feet)



THIS PLAN IS FOR ILLUSTRATIVE PURPOSES ONLY

Whilst every attempt has been made to ensure the accuracy of the floor plan contained here, measurements of doors, windows, rooms and any other items are approximate and no responsibility is taken for any error, omission or misstatement.



Viewings

Viewings by arrangement only. Call 0203 026 0160 to make an appointment.

Council Tax Band

E

EPC Rating:

D

Energy Efficiency Rating		Current	Potential
<i>Very energy efficient - lower running costs</i>			
(92 plus)	A		84
(81-91)	B		
(69-80)	C		
(55-68)	D	66	
(39-54)	E		
(21-38)	F		
(1-20)	G		
<i>Not energy efficient - higher running costs</i>			
England & Wales		EU Directive 2002/91/EC	