

DURDEN & HUNT

INTERNATIONAL



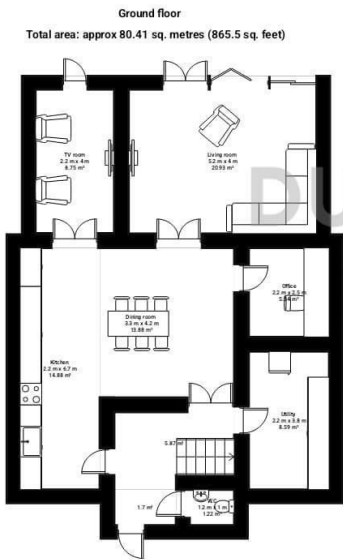
Hornbeam Road, Epping CM16

Offers In Excess Of £875,000

- Semi Detached Family Home
- Four Reception Areas, Open Plan Kitchen Diner, Living Room, Tv Room & Study
- Four Bedrooms
- Large Front Driveway
- Utility Room
- Family Bathroom
- Modern Kitchen Opening Onto Dining Area
- Downstairs WC
- Very Well Located for Theydon Bois Station

309 High Road, Loughton, Essex, IG10 1AL
0203 026 0160

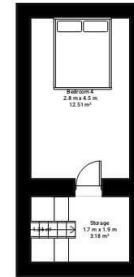
loughton@durdenandhunt.co.uk
<https://www.durdenandhunt.co.uk/>



Hornbeam road
Total floor area: approx 138.94 sq. metres (1495.5 sq. feet)

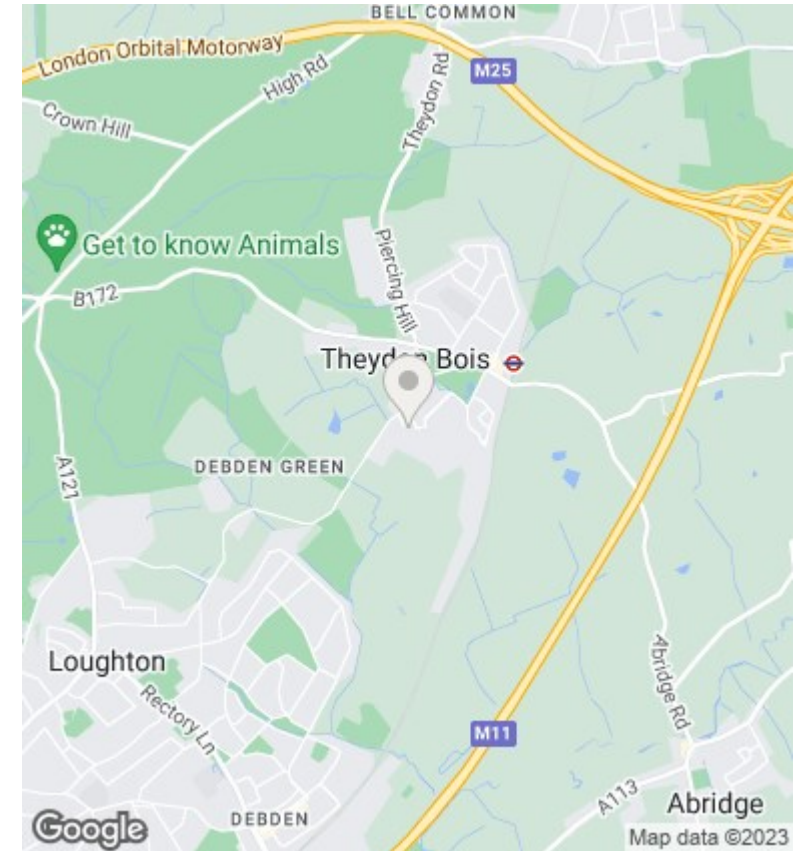


2nd floor
Total area: approx 16.93 sq. metres (182.2 sq. feet)



THIS PLAN IS FOR ILLUSTRATIVE PURPOSES ONLY

Whilst every attempt has been made to ensure the accuracy of the floor plan contained here, measurements of doors, windows, rooms and any other items are approximate and no responsibility is taken for any error, omission or misstatement.



Viewings

Viewings by arrangement only. Call 0203 026 0160 to make an appointment.

Council Tax Band

E

EPC Rating:

C

Energy Efficiency Rating		Current	Potential
<i>Very energy efficient - lower running costs</i>			
(92 plus) A			
(81-91) B			
(69-80) C			
(55-68) D			
(39-54) E			
(21-38) F			
(1-20) G			
<i>Not energy efficient - higher running costs</i>			
England & Wales	EU Directive 2002/91/EC		