

DURDEN & HUNT

INTERNATIONAL



Lambourne Court, Woodford Green IG8

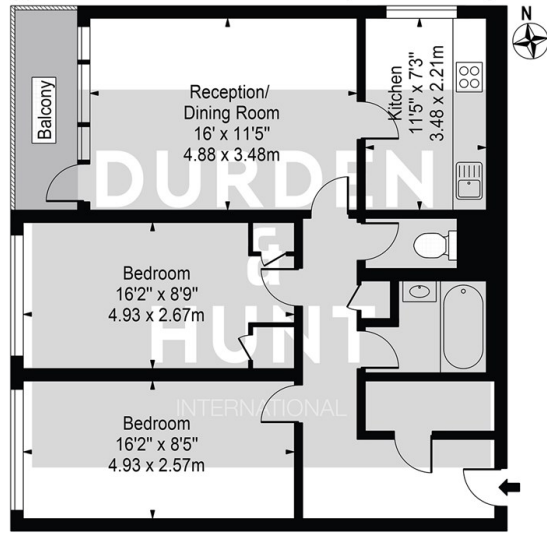
£240,000

- Two Bedroom Apartment
- Private Balcony
- Within Walking Distance To Woodford Underground Station
- Spacious Lounge
- Modern Bathroom
- Close To Local Shops And Amenities
- Modern Kitchen With Integrated Appliances
- Separate W.C
- Cash Buyers Only

309 High Road, Loughton, Essex, IG10 1AL
0203 026 0160

loughton@durdenandhunt.co.uk
<https://www.durdenandhunt.co.uk/>

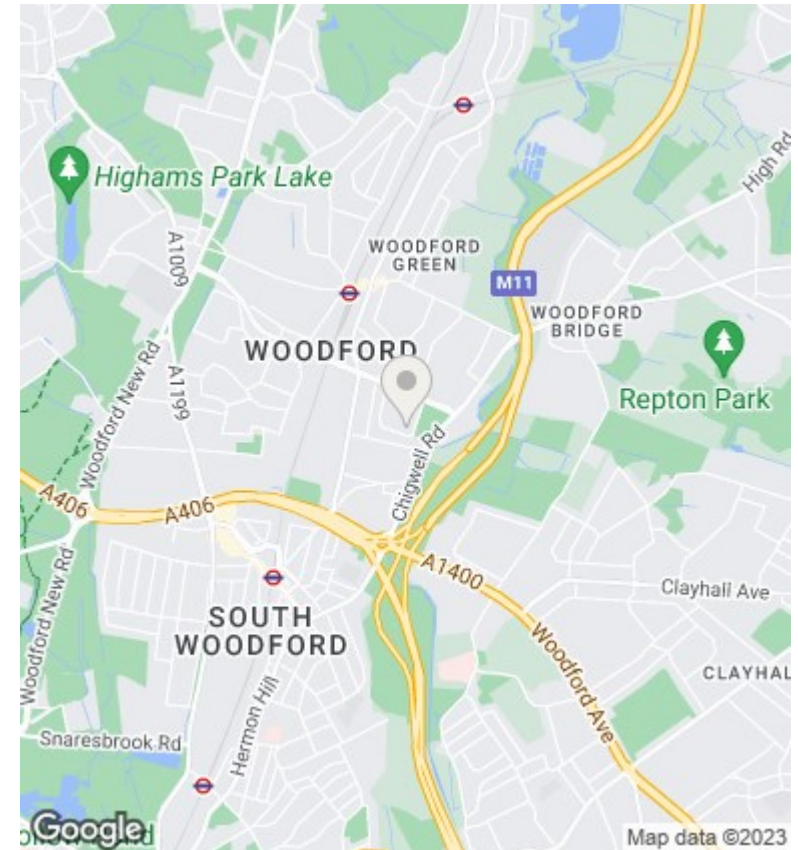
Lambourne Court
 Approx. Gross Internal Area 780 Sq Ft - 72.46 Sq M



Sixth Floor

For Illustration Purposes Only - Not To Scale

This floor plan should be used as a general outline for guidance only and does not constitute in whole or in part an offer or contract. Any intending purchaser or lessee should satisfy themselves by inspection, searches, enquiries and full survey as to the correctness of each statement. Any areas, measurements or distances quoted are approximate and should not be used to value a property or be the basis of any sale or let.



Viewings

Viewings by arrangement only. Call 0203 026 0160 to make an appointment.

Council Tax Band

EPC Rating:

C

Energy Efficiency Rating		Current	Potential
<i>Very energy efficient - lower running costs</i>			
(92 plus) A			
(81-91) B		75	75
(69-80) C			
(55-68) D			
(39-54) E			
(21-38) F			
(1-20) G			
<i>Not energy efficient - higher running costs</i>			
England & Wales		EU Directive 2002/91/EC	