

# DURDEN & HUNT

INTERNATIONAL



## Springfield Drive, Essex IG2

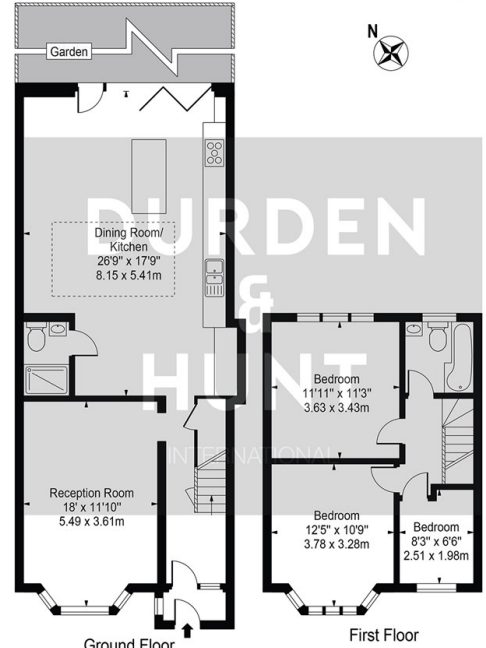
Asking Price £600,000

- Ready To Move Into
- Two Bathrooms Including A Downstairs Shower Room
- Driveway Parking
- Large Extended Kitchen Diner
- Three Well Proportioned Bedrooms
- Spacious Lounge
- Well Located For Multiple Central Line Stations

309 High Road, Loughton, Essex, IG10 1AL  
0203 026 0160

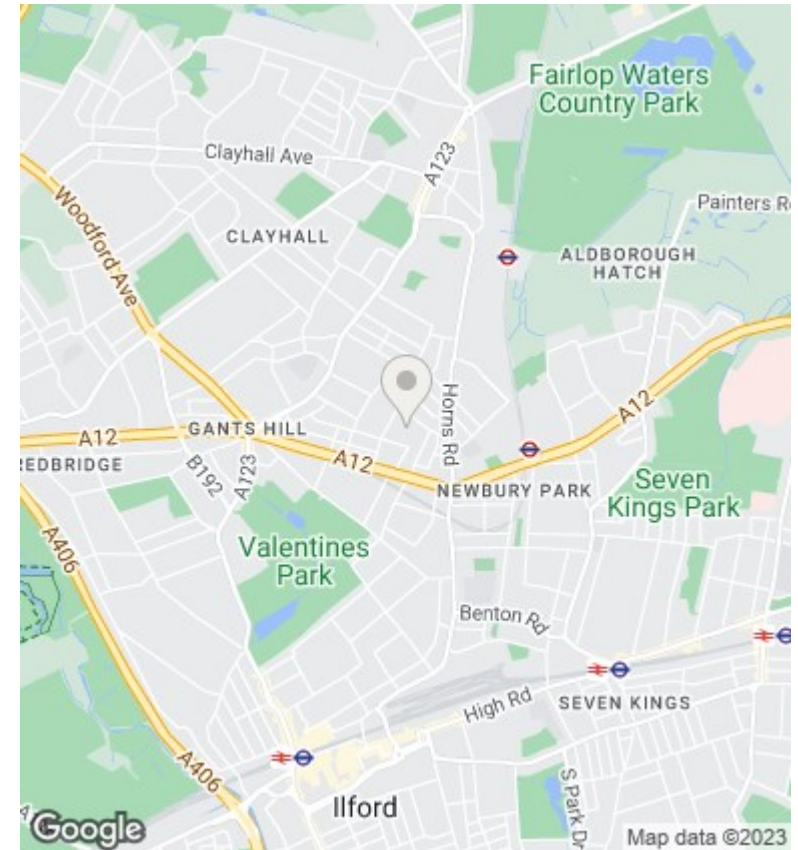
[loughton@durdenandhunt.co.uk](mailto:loughton@durdenandhunt.co.uk)  
<https://www.durdenandhunt.co.uk/>

Springfield Drive  
 Approx. Gross Internal Area 1222 Sq Ft - 113.53 Sq M



For Illustration Purposes Only - Not To Scale

This floor plan should be used as a general outline for guidance only and does not constitute in whole or in part an offer or contract. Any intending purchaser or lessee should satisfy themselves by inspection, searches, enquiries and full survey as to the correctness of each statement. Any areas, measurements or distances quoted are approximate and should not be used to value a property or be the basis of any sale or let.



### Viewings

Viewings by arrangement only. Call 0203 026 0160 to make an appointment.

### Council Tax Band

### EPC Rating:

| Energy Efficiency Rating                           |                         |           |
|--|-------------------------|-----------|
|  | Current                 | Potential |
| <i>Very energy efficient - lower running costs</i> |                         |           |
| (92 plus) <b>A</b>                                 |                         |           |
| (81-91) <b>B</b>                                   |                         |           |
| (69-80) <b>C</b>                                   |                         |           |
| (55-68) <b>D</b>                                   |                         |           |
| (39-54) <b>E</b>                                   |                         |           |
| (21-38) <b>F</b>                                   |                         |           |
| (1-20) <b>G</b>                                    |                         |           |
| <i>Not energy efficient - higher running costs</i> |                         |           |
| <b>England &amp; Wales</b>                         | EU Directive 2002/91/EC |           |