

DURDEN & HUNT

INTERNATIONAL



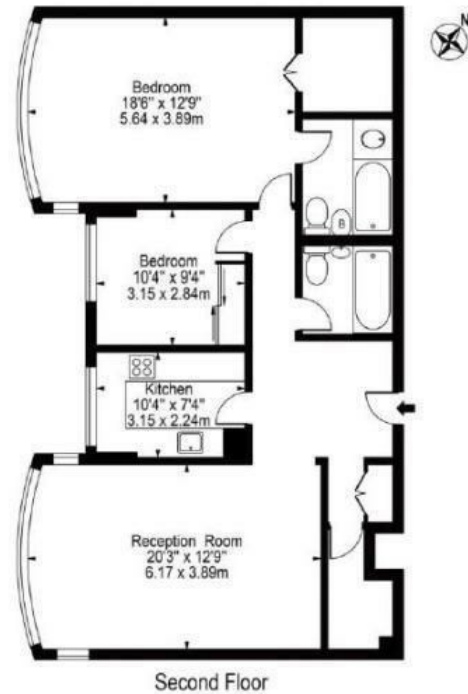
Raynham, London W2

Asking Price £1,300,000

- Hyde Park Estate
- Close to Transport
- Two Bedroom & Two Bathroom
- Porter & Lift

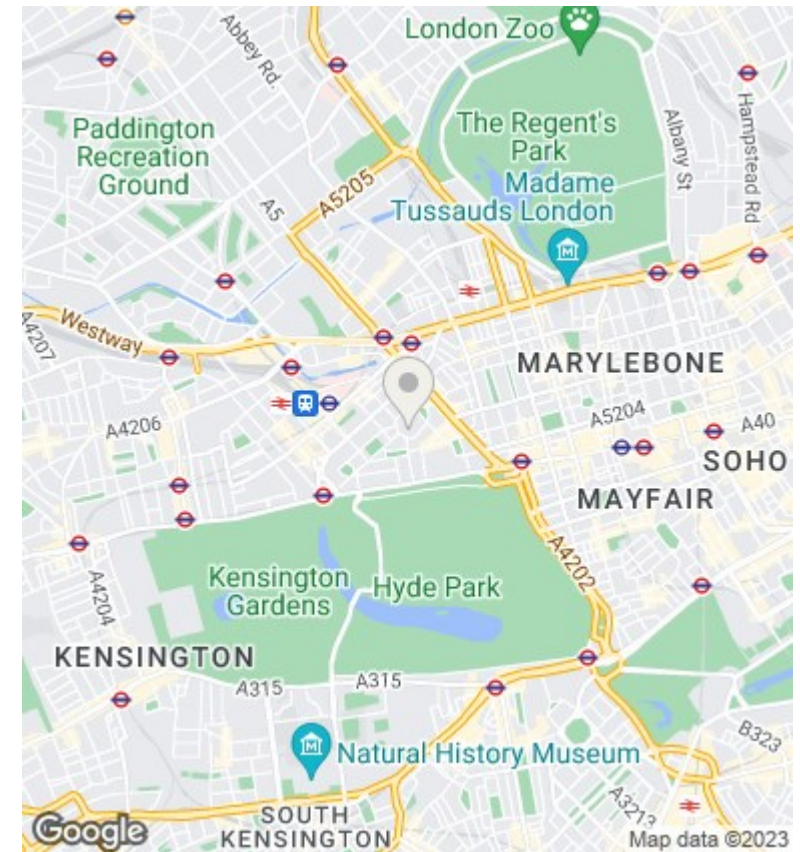
Raynham, W2

Approx. Gross Internal Area 1002 Sq Ft - 93.09 Sq M



Second Floor

For illustration purposes only - Not To Scale
This floor plan should be used as a general outline for guidance only and does not constitute in whole or in part an offer or contract.
Any intending purchaser or lessee should satisfy themselves by inspection, searches, enquiries and full survey as to the correctness of each statement.
Any areas, measurements or distances quoted are approximate and should not be used to value a property or be the basis of any sale or let.



Viewings

Viewings by arrangement only. Call 0203 026 0160 to make an appointment.

Council Tax Band

EPC Rating:

Energy Efficiency Rating		
	Current	Potential
<i>Very energy efficient - lower running costs</i>		
(92 plus) A		
(81-91) B		
(69-80) C		
(55-68) D		
(39-54) E		
(21-38) F		
(1-20) G		
<i>Not energy efficient - higher running costs</i>		
England & Wales	EU Directive 2002/91/EC	