



LUMIERE, 62 PINE GROVE, BROOKMANS PARK AL9 7BW

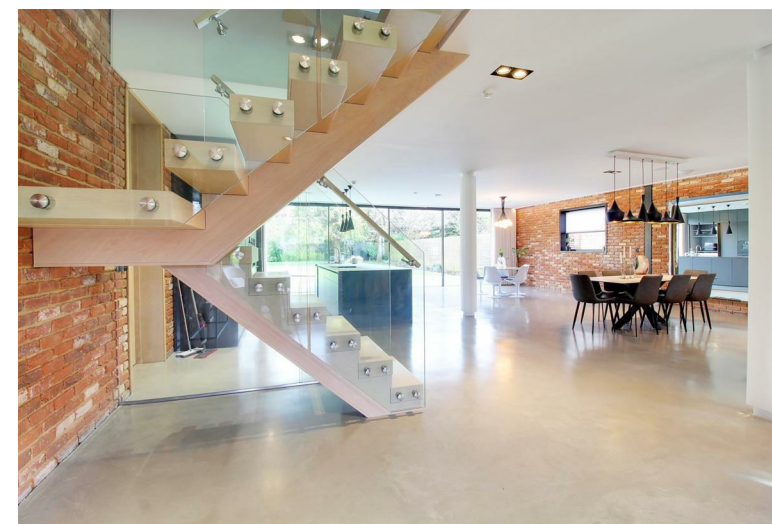
Guide Price £2,495,000 | Freehold

ANDREW WARD EST. 1988
ESTATE AGENTS



Property Overview

An exceptional five bedroom luxurious family SMART home constructed to the highest specification with beautiful mature garden to rear. The property is arranged over three floors (4,000 sq. ft) of stunning contemporary living space comprising of a fabulous open plan living area with polished concrete floors with aluminous feature columns and exposed brickwork to walls and state of the art fully integrated designer kitchen. Additionally there is a cinema room/gym, study, cloakroom and utility room. To the first floor are four double bedrooms all with en suites with a further spacious bedroom and en suite situated on the (top) second floor. The property enjoys good frontage with gated carriageway drive with plenty of parking with beautiful flat lawn gardens to rear with full width decking and mature trees to rear.





Property Features

- Luxury Cutting-Edge Architectural Design
- Luxury " Bulthaup" Kitchen
- Designer Bathrooms
- Filter air system
- Gated Carriageway Drive with Eco Parking
- Five Bedrooms, Five Bathrooms
- Gaggenau appliances
- Smart systems throughout
- Underfloor heating
- Fire sprinkler system

Agents Notes

An amazing 1250 sq ft open plan living room, featuring polished concrete floor, a four panelled floor to ceiling wall of glass overlooking the rear garden. Smart underfloor heating throughout, along with designer lighting arrangements featuring unique illuminated columns to the living room which change colour according to the sun outside but will also alert you if you are wasting energy. Heat recovery ventilation for heating and cooling. Glass staircase. Bespoke Kitchen with Gaggenau appliances, including steam oven, oven, heating plates, combination microwave, dishwasher, fridge and freezer, Quooker hot water tap Extra tall internal oak doors. Five luxuriously designed Bathrooms. Raindance showers with flush fit trays. LED mirrors. Multi media throughout house.



Second Floor

Approximate Gross Internal Area 3927 sq ft – 365 sq m
 Ground Floor Area 1977 sq ft – 184 sq m
 First Floor Area 1353 sq ft – 126 sq m
 Second Floor Area 597 sq ft – 55 sq m



Ground Floor



First Floor



Contact us

35 Bradmore Green, Brookmans Park, Herts, AL9 7QR
 01707 649779 | brookmanspark@andrewward.co.uk

www.andrewward.co.uk

Our Offices

BARNET
 175 High Street, Barnet EN5 5SU
 Tel: 020 8441 6000
 Email: barnet@andrewward.co.uk

BROOKMANS PARK
 35 Bradmore Green, Brookmans Park AL9 7QR
 Tel: 01707 649779
 Email: brookmanspark@andrewward.co.uk

POTTERS BAR
 149 High Street, Potters Bar EN6 5BB
 Tel: 01707 657181
 Email: pottersbar@andrewward.co.uk

Disclaimer: "These property particulars, including floor plans, are set out as a general outline only for guidance and DO NOT constitute any part of an offer or contract. Any purchaser or other must satisfy themselves by inspection or otherwise as to their accuracy. All measurements are given as approximate, no survey or testing of appliances has been carried out. No employee of Andrew Ward Estate Agents has the authority to make or give any representation or warranty in respect of the property."

All enquiries and negotiations must be carried out through Andrew Ward Estate Agents.

ANDREW WARD EST. 1988
 ESTATE AGENTS