



Fitzjohns Avenue, Hampstead

Price on Application





De Laszlo House, Fitzjohns Avenue Hampstead NW3

- Penthouse apartment approached via a private key operated lift
- Double drawing room/dining room
- Very bright flat arranged over two buildings (fourth floor)
- Communal Garden
- CCTV
- 4 bedrooms, 4 bathrooms (all en-suite)
- Kitchen breakfast room and separate utility room
- 2 underground car parking spaces
- Concierge

Offered for sale is this stunning and incredibly bright penthouse apartment, situated in this luxurious development. The apartment is arranged over the fourth floor and extends to approx. 2,691 sq. ft (250 sq. m). The property offers modern, flexible and spacious living accommodation.

Originally designed as two apartments the current owners, in conjunction with the original developers, created a single spectacularly designed penthouse. The apartment occupies the entire fourth floor of two of the three buildings that make up the development and enjoys incredibly bright aspect to all sides.

Price on Application



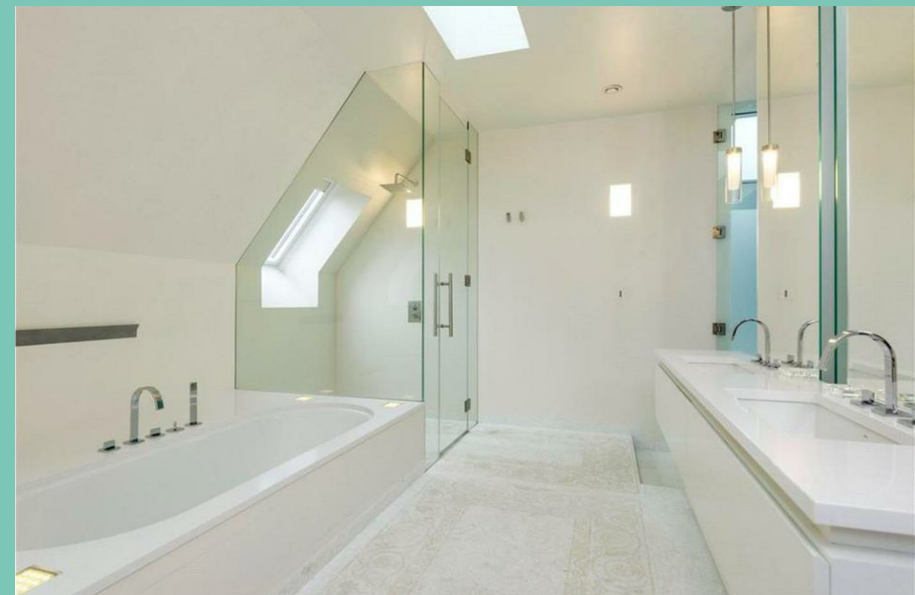
The apartment provides four double bedrooms. The master suite has the benefit of two glass-enclosed dressing rooms and a large en-suite bathroom with separate walk-in shower, bath and twin sinks. Each of the three further bedrooms also have en-suite bathrooms. The living accommodation includes an open plan, spacious double reception/dining room with well fitted and equipped kitchen/breakfast room, utility room and guest WC.





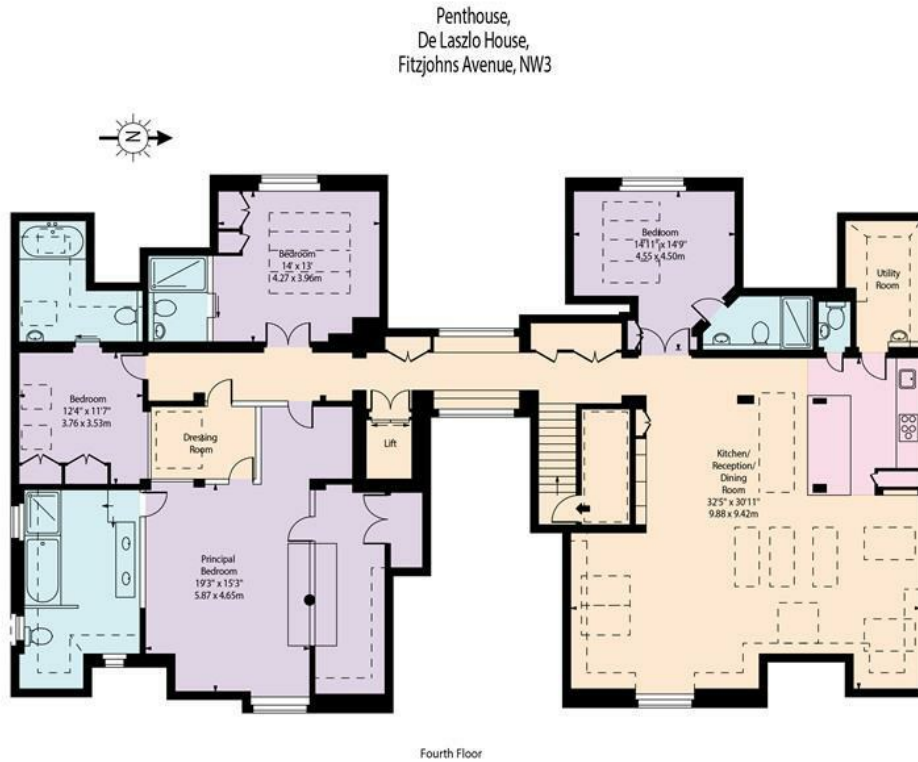
The apartment further benefits from private key-operated direct lift access, secure underground parking for two cars, concierge, CCTV security, staircase access, impressive communal entrance foyers and an extensive west-facing landscaped garden. Situated on the lower slopes of the tree-lined Fitzjohn's Avenue in Hampstead NW3, with St John's Wood NW8 and Belsize Park close by, De Laszlo House has excellent transport links via the Jubilee Line at Swiss Cottage providing access to the West End, City and Canary Wharf.

De Laszlo House is named after Philip De László, a celebrity Royal portrait artist, who lived here from 1921 to 1937. The scheme was designed by award-winning Dandi Living, has 17 magnificently built residences located behind the Arts & Crafts style façade of three grand Victorian villas, now unified within a single seamless development.





Floor Plans



Approx Gross Internal Area 2691 Sq Ft - 249.99 Sq M
Approx Floor Area Including Restricted Heights 2900 Sq Ft - 269.41 Sq M

For Illustration Purposes Only - Not To Scale Floor Plan by www.nogaphotostudio.com Ref: No.26257

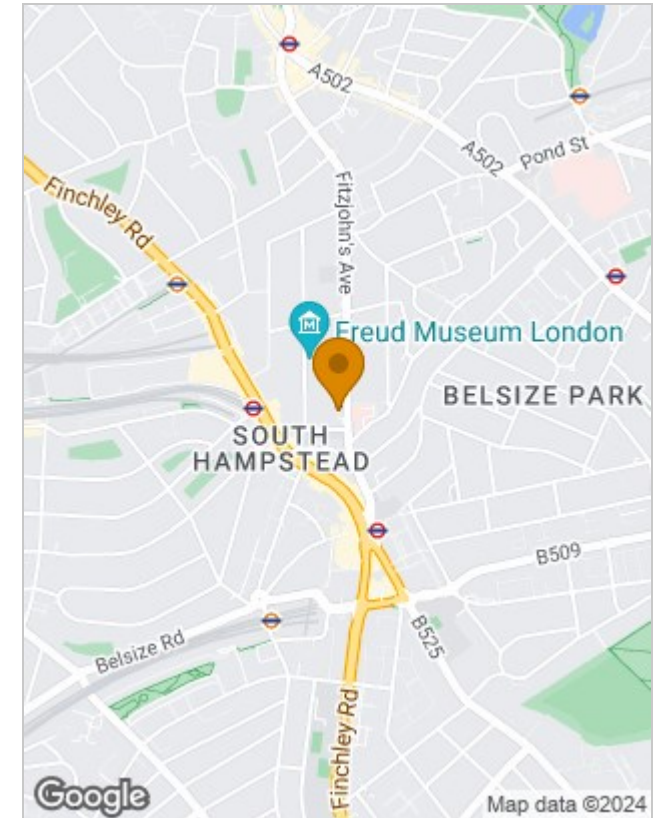
This floor plan should be used as a general outline for guidance only. Any intending purchaser or lessee should satisfy themselves by inspection, searches, enquiries and full survey as to the correctness of each statement. Any areas, measurements or distances quoted are approximate and should not be used to value a property or be the basis of any sale or let.

Viewing

Please contact our GA Residential Office on 020 3637 4477 if you wish to arrange a viewing appointment for this property or require further information.

The particulars are set out as a general outline only for the guidance of intended purchasers or lessees, and do not constitute, any part of a contract. Nothing in these particulars shall be deemed to be a statement that the property is in good structural condition or otherwise nor that any of the services, appliances, equipment or facilities are in good working order. Purchasers should satisfy themselves of this prior to purchasing.

Location Map



Energy Performance Graph

Energy Efficiency Rating		Current	Potential
<i>Very energy efficient - lower running costs</i>			
(92 plus) A			
(81-91) B			
(69-80) C		75	75
(55-68) D			
(39-54) E			
(21-38) F			
(1-20) G			
<i>Not energy efficient - higher running costs</i>			
England & Wales		EU Directive 2002/91/EC	

99 Heath Street, Hampstead, NW3 6ST

Tel: 020 3637 4477 Email: info@garesidential.co.uk <https://www.garesidential.co.uk/>