



## 12 Pennyquick View

, Bath, BA2 1RZ

40% Shared ownership £80,000



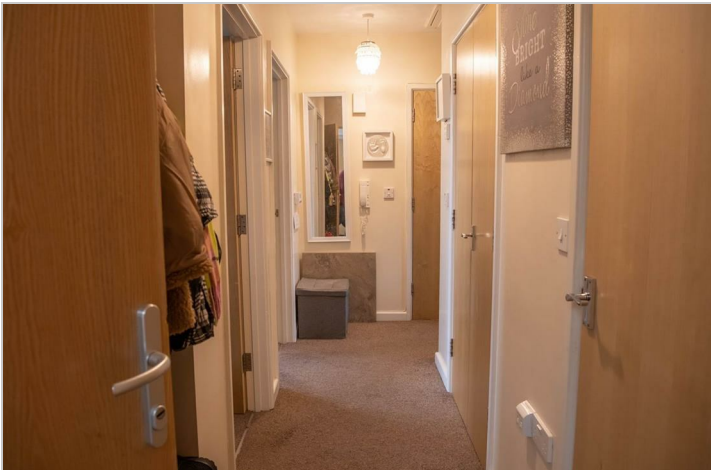
# 12 Pennyquick View

, Bath, BA2 1RZ

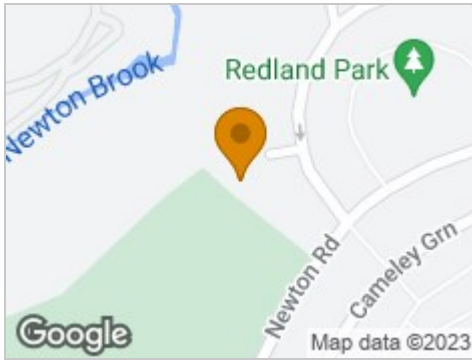
40% Shared ownership £80,000







## Road Map



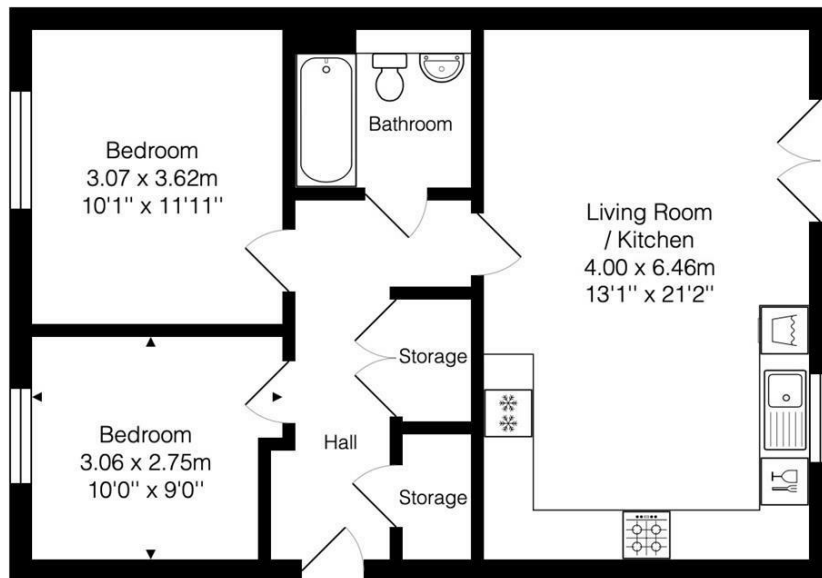
## Hybrid Map



## Terrain Map



## Floor Plan



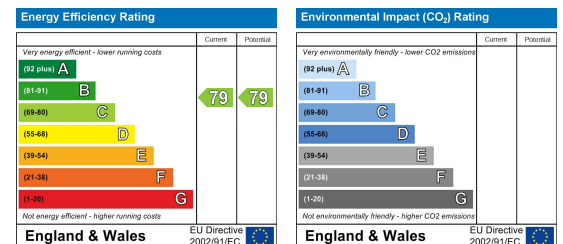
Total Area: 62.3 m<sup>2</sup> ... 671 ft<sup>2</sup>

Whilst every attempt has been made to ensure the accuracy of the floorplan contained here, measurements of doors, windows, rooms and any other items are approximate and no responsibility is taken for any error, omission or mis-statement. This plan is purely for illustrative purposes only and should be used as such by any prospective purchaser. Area includes internal and external wall thickness  
www.epcassessments.co.uk

## Viewing

Please contact our Aquarius Homes Office on 01225 840007 if you wish to arrange a viewing appointment for this property or require further information.

## Energy Efficiency Graph



These particulars, whilst believed to be accurate are set out as a general outline only for guidance and do not constitute any part of an offer or contract. Intending purchasers should not rely on them as statements of representation of fact, but must satisfy themselves by inspection or otherwise as to their accuracy. No person in this firm's employment has the authority to make or give any representation or warranty in respect of the property.